




# CRIMSAFE SECURITY SCREENS

*Wynstan*  
BLINDS DOORS SHUTTERS AWNINGS





Screw-Clamp  
Technology

Triple  
locking

# BEAUTIFUL & TOUGH SECURITY SCREENS

Your home and family's security should never be compromised, which is why Wynstan brings you the unbeatable solution of Crimsafe Security Screens. Recognised as the most robust and reliable security screen available, Crimsafe offers unparalleled protection. With Crimsafe, you no longer need to sacrifice style for security, as it seamlessly blends aesthetics with uncompromising protection.





## 8 REASONS WHY YOU NEED A QUALITY SECURITY SCREEN



### STOP INTRUDERS

Common entry points for break-ins: front & back doors, first-floor windows. Secure them with a Security screen for worry-free protection.



### FRESH AIR & BREEZES

Enjoy the many benefits of fresh air and cool breezes flowing through your home without compromising on security.



### ENERGY EFFICIENCY

Crimsafe's Tensile Tuff® mesh blocks up to 53% of solar heat gain and 62% of UV rays, making your home more energy-efficient.



### INSECT PROTECTION

Protect your family and home from all unwanted visitors. From flies and mozzies to burglars and intruders.



### WINDOW SAFETY

A Life-Saving Concern: Ordinary fly screens offer little protection, leaving the possibility of fatal window falls. Upgrade to a safer solution that provides robust protection and peace of mind.



### PET PROOF

Pets can claw and tear through fly screens or thin mesh. Crimsafe mesh withstands even the most determined pets.



### UNHINDERED VIEWS

No need for unsightly bars and grilles. Crimsafe provides unrestricted views and a feeling of open space.



### CYCLONE AND FIRE PROTECTION

Unmatched defence against nature's fury - withstand ember attack and radiant heat. Our cyclone-rated protection creates a robust barrier, guarding against hailstones and wind-borne debris.

# PRODUCT RANGE

## CRIMSAFE CLASSIC



**Crimsafe Classic, the new benchmark in security screens offering renowned strength with smoother, cleaner lines.**

Reinforced with the proven strength of carbon fibre, the exclusive CF6 Screw-Clamp™ bites down on the stainless steel mesh on impact with a vice-like grip. This is why Crimsafe Classic not only meets the Australian Standard of 5 x 100 Joule impacts, but can also withstand a single impact of up to 550 Joules.

**The original security screen that revolutionised the industry over 25 years ago and offers affordable, entry-level protection for your family and home.**

Screw-Clamp™ technology together with Tensile-Tuff® 304 structural-grade stainless steel mesh makes Crimsafe Regular much more than a security screen. It's a solution that offers unhindered views, fresh air, natural light and protection against solar heat gain and harmful UV rays.

## CRIMSAFE REGULAR



**Redefines security screens by offering superior strength, versatility and architectural styling. Withstanding 750 Joules of impact.**

Crimsafe Ultimate is up to 40% stronger than Crimsafe Regular and Classic plus it is available in the widest variety of products.

## CRIMSAFE ULTIMATE



# CRIMSAFE FEATURES

Features	Classic	Regular	Ultimate
<b>Strength</b> Strength is measured as the amount of force that the screen can withstand. The Australian Standard is five impacts of 100 Joules	5x stronger than the Australian Standard* (up to 550 Joules).	Exceeds Australian Standards & can withstand up to 550 Joules of impact*	7x stronger than the Australian Standard* (up to 750 Joules)
<b>Fastening method</b> How the mesh is secured in the screen frame.	Tamper resistant screws	Tamper resistant screws	2 x more tamper resistant screws than Classic
<b>Warranty (+ Extended Warranty)</b> Years of protection covered under your Crimsafe extended warranty	3 Years Wynstan (9 Years Extended)	3 Years Wynstan (9 Years Extended)	3 Years Wynstan (9 Years Extended)
<b>Mesh</b> Crimsafe Tensile-Tuff® stainless steel mesh is 26.5% thicker than typical stainless steel mesh	0.9mm Tensile-Tuff® 304 structural grade	0.8mm Tensile-Tuff® 304 structural grade	0.9mm Tensile-Tuff® 304 structural grade
<b>Clamping System</b> System used to secure mesh in the frame	Carbon Fibre CF6 Screw-Clamp™ technology	Exclusive Screw-Clamp™ technology	Exclusive Screw-Clamp™ technology
<b>Locking options</b> Can be mechanical or electronic (allowing access by Keypad, Bluetooth or Keyfob)	Mechanical	Mechanical	Mechanical
<b>Locking points</b> Number of secure points where the door locks into the frame	3	3	3

\*Wynstan offers a standard 3 year warranty on installation, door product warranty is supplied through Crimsafe Australia.

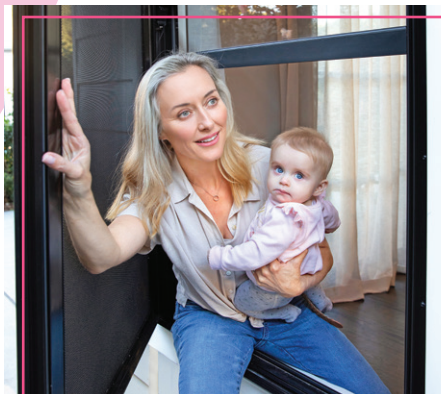


# APPLICATIONS



## SECURITY DOORS

Hinged Doors  
Sliding Doors  
French Doors  
Bi-Fold Doors  
Stacking Doors



## SECURITY WINDOWS

Hinged Windows  
Fixed Windows  
Sliding Windows  
Safe-S-Cape™ Windows



## PATIO ENCLOSURES

Garage & Storage Areas  
Patio Enclosures

## STYLISH COLOURS

Choose from a modern range of colours and timber facades designed to not only match your homes colour and decor but also to enhance it's look.

**Dulux**

**Interpon**  
POWDER COATINGS



\*Colours are an indication only and may appear slightly different on paper, or on screen, compared to the actual powder coated colours.

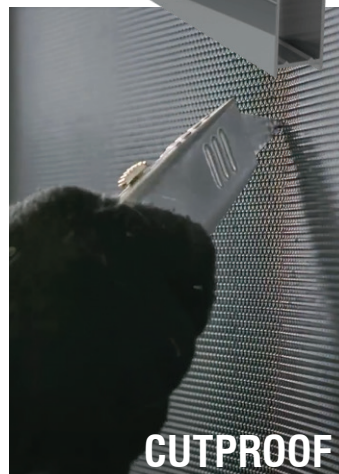
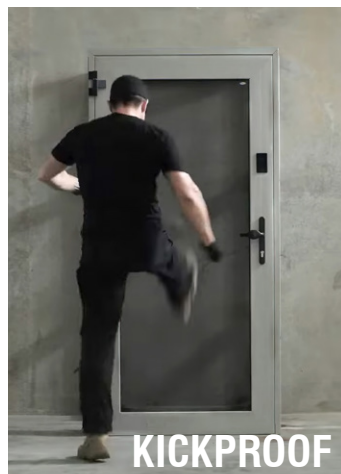


# WHAT MAKES CRIMSAFE SO STRONG?

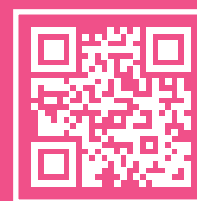
The combination of the unique Screw-Clamp™ technology, Tensile Tuff® Mesh and Triple Locking makes all the difference. They work together to absorb and disperse impact, giving Crimsafe exceptional strength and the ability to withstand tremendous force.

304 structural  
grade stainless  
steel mesh

Exclusive CF6  
Screw-Clamp  
Technology



**DON'T TAKE OUR  
WORD FOR IT...**

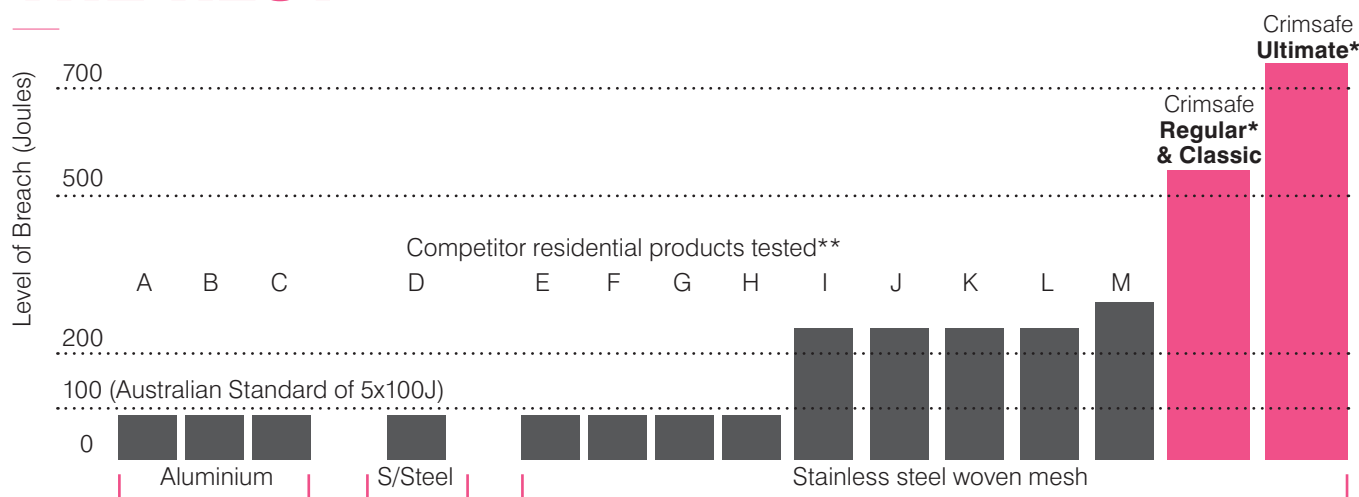


SCAN ME

Scan to discover more on how crimsafe is the ultimate security solution for your home or business.

## CRIMSAFE OUTPERFORMS THE REST

Independent university testing found that Crimsafe significantly outperformed competitor screens and the levels required by the Australian Standards.



Aluminium and stainless steel perforated products use a single sheet of metal with holes punched in it to create the 'screen'. Woven mesh screens (such as Crimsafe) use wires woven together to form a mesh screen. \*Single Impact \*\* Multiple Impacts.

Graph prepared by Crimsafe based on tests conducted by The University of Queensland, 2017.

### Q. What is the Australian Standard?

A. Australian Standards for the security screen industry test the force of impact that a security screen can withstand, measured in 'Joules' - a unit of energy. To meet the standard, a security screen must withstand five single impacts of 100 joules.

### Q. What does 100 Joules mean in a real-life example?

A. 100 Joules of energy is roughly equivalent to the impact of a young child running into a glass door.

### Q. Do all security screens pass the Australian Standard?

A. No. The University of Queensland testing found that some screens failed the minimum standard required.

### Q. Is the Australian Standard adequate?

A. Crimsafe doesn't think so. The average adult male weighing 86kg can easily exert more than 100 Joules of force in a single impact. That's why Crimsafe is engineered to be much stronger than the minimum standard, and clearly stronger than competitor products on the market.





Premium level 304  
structural-grade  
Tensile-Tuff™ mesh



## WHY CRIMS SAFE

It's taken years of research to develop the strongest, most trusted security screen on the market, and it's a reputation that Crimsafe is determined to keep through constant innovation. When it comes to protecting your loved ones, Wynstan won't settle for second best so we've chosen Crimsafe Security Screens. Crimsafe's exclusive Screw-Clamp system gives Crimsafe an unparalleled advantage and consistently outperforms competitor products in independent testing. Crimsafe has many imitators, but there is simply no equivalent when it comes to security screen solutions to protect your family and home.

**If it's not Crimsafe...  
It's not Crim Safe.**





## BE INSTALL SAFE

**In both NSW and Victoria, the State Governments regulate and license the installation of security products to ensure your safety and peace of mind. At Wynstan, we take these regulations seriously to provide you with the highest level of service.**

In NSW, we hold a master security license, #408820264, which is required by law. This license is issued by the Security Licensing & Enforcement Directorate (SLED), a division of the police. Rest assured, our installers who handle the installation of our Crimsafe security products all possess security licenses obtained from the NSW Police, ensuring their expertise and professionalism.

Similarly, in Victoria, we have obtained the necessary licenses and registrations from the Victorian Building Authority (VBA). Our security business registration number is 832 194 32S, and we hold contractor licenses with the number 20196c. These licenses demonstrate our commitment to meeting state standards and regulations, guaranteeing the safety and quality of our installation work.

Engaging a licensed professional is crucial when installing a security door to comply with local regulations and ensure the job is done correctly. By choosing Wynstan, you can have confidence in our licensed experts who will provide you with a secure and reliable installation that meets all the necessary standards.

