



*Wynstan*  
BLINDS DOORS SHUTTERS AWNINGS





### 1. FREE Measure & Quote

Book your free quote with your local consultant and they'll visit your home to provide expert advice and measure up for your products!

### 2. Confident Curation

To help you feel confident in your selections we offer 10 FREE fabric samples shipped straight to your door - we also have 32 showrooms so you can get up close with life-sized products at a convenient location.

### 3. Ready, Set, Go!

Once you've proceeded with your order, we hit the green light on custom making your Wynstan products down to the millimetre at our factory in Yennora, NSW.

### 4. Expert Installation

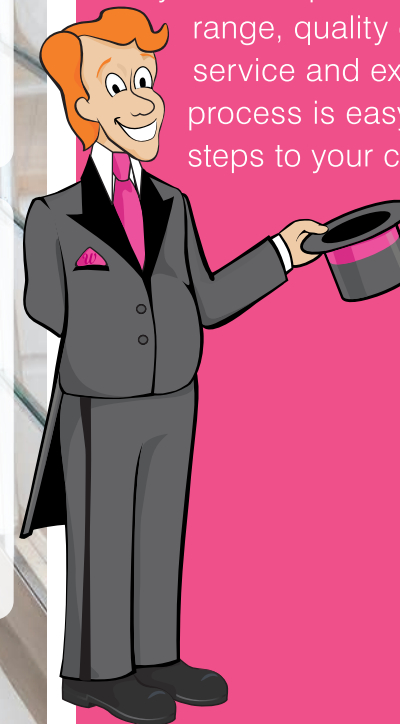
Don't lift a finger, thanks to our installation service included in your quote. Our team will book you in and expertly install your products to complete your transformation!

## INDEX

- Blinds ..... 6
- Curtains ..... 19
- Awnings ..... 22
- Wynmotion Motorisation ..... 32
- Shutters ..... 36
- Security Doors, Grilles & Flyscreens ..... 40

## THE WYNSTAN WAY

Wynstan has proudly been transforming Aussie homes with Blinds, Doors, Shutters and Awnings for over 55 years. We pride ourselves on our large range, quality craftsmanship, friendly service and expert advice. Our process is easy, with just 4 simple steps to your custom-made products.



SCAN TO BOOK YOUR  
FREE MEASURE AND  
QUOTE

# 32 SHOWROOMS ACROSS NSW & VIC



## Sydney Showrooms

Baulkham Hills	Kensington
Brookvale	Liverpool
Caringbah	Mosman
Concord	Narellan
Drummoyne	Riverwood
Edgecliff	Rockdale
Engadine	Rooty Hill
Five Dock	Willoughby
Hornsby	

## Central Coast Showrooms

East Gosford	Toukley
Kotara	

## South Coast Showrooms

Unanderra	Warilla
-----------	---------

## Melbourne Showrooms

Airport West	Fitzroy
Blackburn	Heidelberg
Coburg	Hoppers Crossing
Dandenong	Sunshine North
Elsternwick	Toorak







## PROUDLY AUSTRALIAN MADE & OWNED

We have been manufacturing in Australia for over 55 years. When you purchase Wynstan blinds, doors, curtains and awnings you are investing into the Australian Manufacturing industry and helping us provide over 450 Aussies with jobs!

The Turner family who founded Wynstan still proudly own and manage the business today. Bruce Turner, our managing director, oversees everything from the 22,000sqm's of factory floor to our installation team and 32 showrooms, we continue to be proudly Aussie owned and made!





## AS SEEN IN...



**Country Home  
RESCUE**  
with Shayna Blaze

AUSTRALIAN  
**HOUSE  
& GARDEN**

home  
beautiful

**INSIDE**

**SPACE  
INVADERS**

**Style**  
SOURCEBOOK



**OVARIAN  
CANCER  
AUSTRALIA**

Wynstan supports Ovarian Cancer Australia (OCA) in loving memory of Margaret Turner, wife of managing director Bruce Turner. Margaret lost her battle with this deadly disease in 1994, leaving behind Bruce and her three children. Wynstan has raised over \$500,000 to date in her memory and will be donating \$2 from every order placed in 2024.



Margaret Turner

## SPONSORSHIP AND COMMUNITY

As a family-owned business, we believe it's important to get involved and support local communities and families across Australia. Wynstan prides itself in supporting numerous local community groups, clubs and charitable organisations.



**NSW**

Crime Stoppers NSW is the most trusted information receiving service for people wanting to provide information on unsolved crimes or suspicious activity. As home security is of paramount importance to us at Wynstan, we've joined Crimestoppers as a community partner to promote keeping your loved ones and home safe with top tips, tricks and security screen products!



# BLINDS

---

Beautifully streamlined and super stylish, Wynstan's range of blinds cover all tastes, styles and budgets – and are proudly made right here in Australia.

Roller Blinds  
Siesta Blinds System  
Roman Blinds  
Vision Blinds  
Vertical Blinds  
Panel Glides  
Venetian Blinds  
Sheer Shades  
Honeycomb Shades





# ROLLER BLINDS

Create a sleek, modern look with a practical Roller Blind. Roller Blinds are neat and discreet when pulled up, and stylish when down.

Wynstan offers an extensive range of quality fabrics in a number of colours, patterns and textures to suit Roller Blinds. Blockout fabrics are great for bedrooms while sheer and translucent fabrics are ideally suited to living areas, you can even pair these with curtains too!



**Double Roller Blind.**





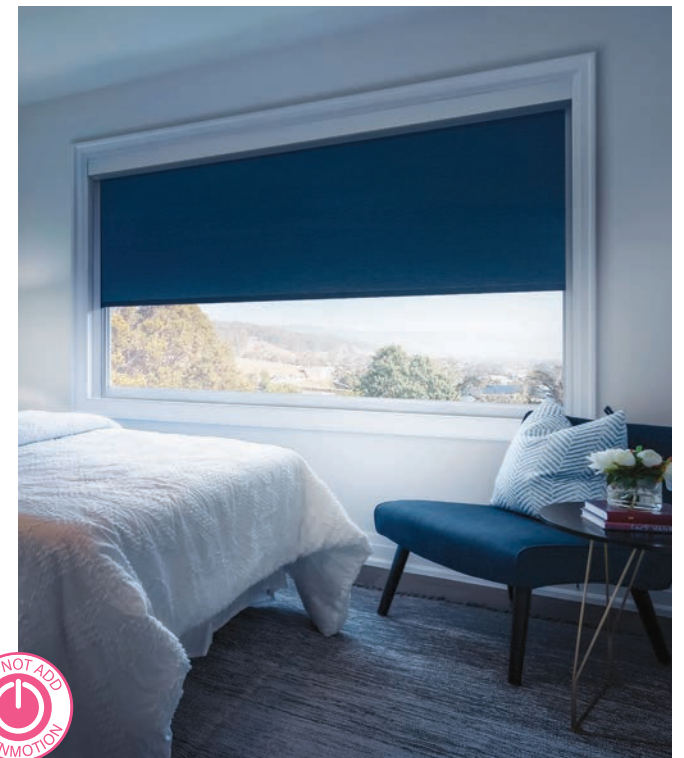
Side channels blockout light.

## SIESTA BLIND SYSTEM

The perfect sleep starts with a dark space and our Siesta Blind System is the number one choice for blocking external light day or night.

Wynstan's Siesta Blind System ensures ultimate privacy by blocking light from entering the room with its unique channel and headbox system.

A popular option for shift workers requiring a dark space to sleep during the day, nurseries, media/AV rooms or even for those who just love a sleep in!





# ROMAN BLINDS

These classic window coverings offer streamlined simplicity and understated style.

A sophisticated window covering – the tailored fabric folds of Roman Blinds provide discreet style, along with simple functionality. Favoured by interior designers, they offer privacy and sun protection without fussy detailing. We carry a variety of quality blackout, sheer and translucent fabrics in a wide range of colours, patterns and textures to suit all decors and styles.

We also manufacture Batten Blinds, which are Roman Blinds fitted with slim wooden strips along the horizontal joins of the fabric. These give character and texture and come in a range of colours to match any style.

Roman Blinds can be manually operated by cord or chain, or motorised for luxury and convenience.







## VISION BLINDS

Vision Blinds add an elegant light diffusion of sheer fabric with the stylish practicality of a roller.

The front layer moves independently of the back layer, allowing the stripes to glide between each other and giving you more control over light and privacy. We offer a range of contemporary colours and fabric palettes of statement stripes, including dramatic metallic finishes, pretty sheers and natural woven effects.



Clean lines and elegant textures.



# VERTICAL BLINDS

A classic choice of window covering, Vertical Blinds are popular because they are practical and versatile.

Suitable for both windows and doors, they allow you to create consistency throughout your home. Vertical Blinds are available in three slat widths, and fabrics range from blackout to translucent. Wynstan's three-weight program allows you to choose between weights and chain, special weights or sewn in weights.

Tracks can be colour coordinated to match your chosen fabric and blinds can also be further customised with a fabric insert or fabric pelmet. Vertical Blinds can be operated by wand control or cord and chain control.







## PANEL GLIDES

Inspired by Asian designs, with large panels and simplistic functions, Panel Glides give any space a sleek and contemporary look.

This is a system of panels attached to a carrier running along a discreet track, which allows for the optional addition of a fashionable pelmet. Panel Glides can also be used as stylish room dividers, making them a beautiful alternative to traditional partitioning systems. They can also cover large openings and come in our convenient wand control system.





# VENETIAN BLINDS

Venetian Blinds are designed to welcome in light, provide a high level of privacy and effectively moderate air flow.

With various materials, operative methods, colours and slat sizes to choose from this style of furnishing is everlasting for aesthetics and functionality. Wynstan offers 3 options in our range:

- **Timber – Cedar or Basswood**
- **Timber-look**
- **Aluminium**

Our Timber Venetian options include lacquered cedar or painted basswood while our Timber-look venetians are perfect for wet spaces such as bathrooms and kitchens because of their superior moisture tolerance.

Aluminium Venetian Blinds by Wynstan are made thicker than market standards for extra durability and strength with an extensive colour range including pastels and metallic shades.







# SHEER SHADES

These stylish Sheer Shades combine the best elements of blinds and curtains in one highly intelligent window covering.

Constructed with a series of tilting fabric vanes suspended between two layers of sheer fabric, Sheer Shades allow for control over the degree of light and privacy. When the vanes are open, they beautifully filter the light and almost disappear, allowing a clear view to the outside. When closed, the blind provides privacy, without completely darkening the space. The sheer polyester fabric is luxurious and delicate in appearance, yet durable enough for everyday use. Its anti-static nature helps repel dirt and dust. The headrail can be colour coordinated to discreetly conceal the blind when fully raised.



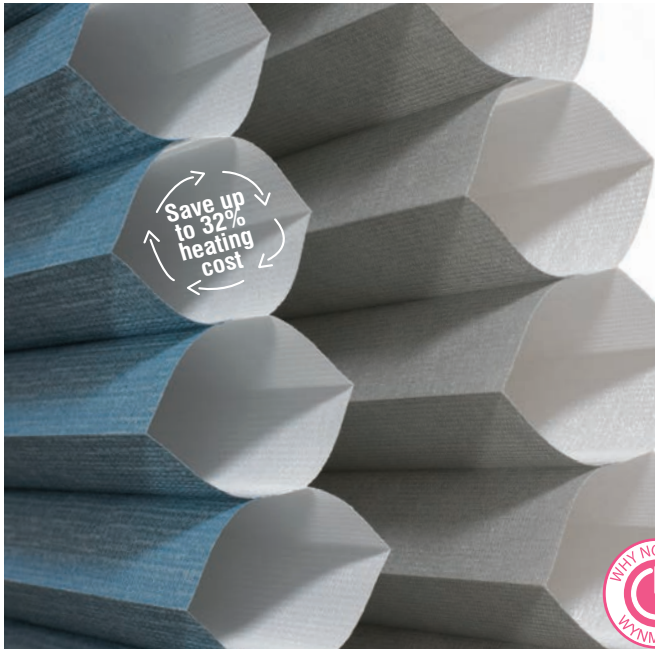
Close-up of Sheer Shades.



# HONEYCOMB SHADES

These advanced Honeycomb Shades feature a unique cellular structure resembling honeycomb.

Air passing through the blinds gets trapped in the structure, which assists in noise reduction and energy efficiency. Honeycomb Shades can be customised for unique window shapes, including skylights. Their highly versatile bottom-up and top-down functions allow you to enjoy views while maintaining privacy. Honeycomb Shades are manufactured from a durable fabric, ideal for everyday use, yet fine enough to diffuse light into an ambient glow. The shades are operated manually by cord, or can be motorised.



A unique honeycomb structure saves energy by trapping air, making it easier to heat and cool your home.







Blockout

Translucent

Sheer/Sunscreen

## OPACITY

### LIGHT CONTROL

The most important factor for many people when selecting blinds is light control. A good blind will block or filter the light perfectly according to the style and purpose of the room. At Wynstan we have three opacity options when it comes to selecting blind fabrics. Here's a guide so you choose the one for you:

### BLOCKOUT

Blockout fabrics are perfect for privacy and complete light control. This type of fabric allows you to entirely blockout the outside light, as well as providing total privacy. They are best suited to rooms where complete light screening is top priority, such as a bedroom or media room.

### TRANSLUCENT

This type of fabric softens harsh light, while providing daytime privacy. Translucent fabric allows natural illumination, creating a beautiful ambience. This fabric is perfect for kitchens and family rooms.

### SHEER/SUNSCREEN

Sheer fabrics allow light to be diffused, while allowing you to enjoy the view. This is designed to stop glare but allow light in, where visibility is important.



# KIDS COLLECTION & CHILD SAFETY

We have created a fun and unique fabric collection all for Kids. 'Y' not transform your kids' room to a wonderful escape where their imaginations can run wild!

Whether you're creating a dinosaur or woodland oasis, want something unisex for a new baby on the way, or a glow-in-the-dark feature, we've got you covered. Our Kids Collection also includes various blackout fabrics to keep the daylight out when your little one needs to sleep.

Wynstan takes its child care safety responsibilities very seriously. We are a family business, we have children of our own, and child safety is paramount to us in the design of our products.

When blind cords are too long or end in a loop, children can quickly become entangled in the cord, potentially strangling the child. This is why we always fit a child safety device on every cord operated product. Alternatively you can motorise your blinds, and eliminate the cords all together. You may just need to hide the remote!



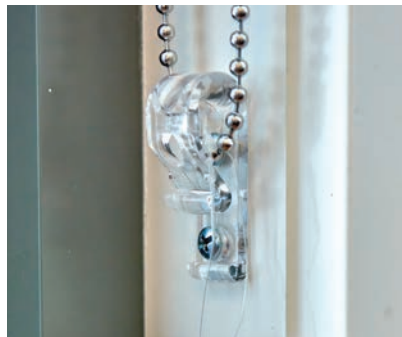
Stars glow in the dark on this fabric!

Night

Day



Closeup of our child safety device.





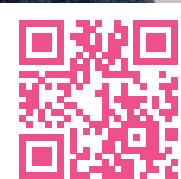


# 10 FREE FABRIC SAMPLES

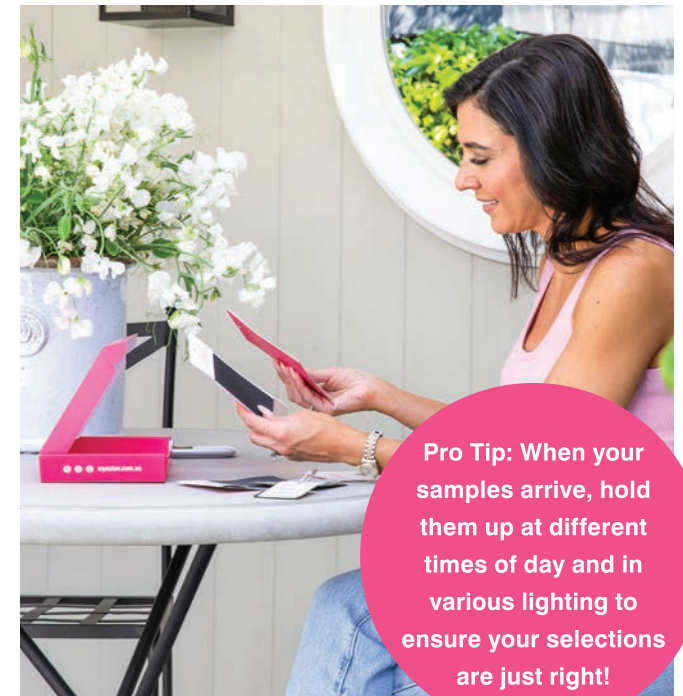
Getting started on your project? Plan it, touch it, create it!

Explore our sampling service and receive 10 FREE fabric samples delivered straight to your door. Explore a myriad of fabric options for Roller Blinds, Roman Blinds, Panel Glides, Vertical Blinds, Curtains, and Awnings. Just add them to your cart, and they'll be with you in a few days.

Scan the QR code below or visit [wynstan.com.au/shop](https://wynstan.com.au/shop) to begin.



SCAN TO ORDER  
YOUR FREE SAMPLES



**Pro Tip:** When your samples arrive, hold them up at different times of day and in various lighting to ensure your selections are just right!



# CURTAINS

---

Frame the view outside whilst creating a beautiful indoor space using our curtains to create soft flowing lines and smooth complementing colours.

Curtains  
Veri-Shades®







Opt for a double curtain for ultimate control

## CURTAINS

Elegant, on-trend and oh-so-beautiful, our range of custom Curtains will add a finishing touch to your home, no matter what your style.

Soft, luxurious and layered, with over 100 fabric options, from blockouts to luminous sheers, and sumptuous textures, to suit all interior styles and budgets. Explore our three design styles S-Wave, Pinch Pleat and Reverse Box today.

For private spaces, such as bedrooms, you can choose a blackout fabric for your Curtains, or pair a sheer Curtain with a blackout Roller Blind, for the ultimate combination of style and functionality.





# VERI SHADES®

These beautiful curved fabric vanes contain a unique patented design that has the elegance and functionality of a blind and the privacy of a curtain.

With the turn of a wand you can easily adjust the Veri Shades® to control and adjust light levels, depending on the position of the sun, or privacy required. Ideal for modern indoor-outdoor living spaces, you can walk through the individual fabric vanes whether they are opened or closed.



Walk through when closed





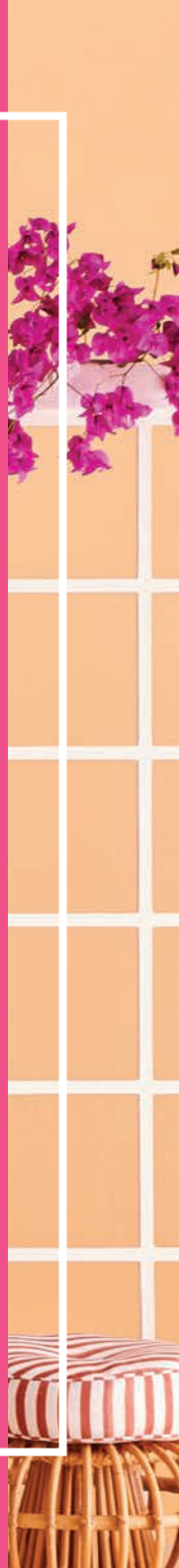


# AWNINGS

---

Essential for Australia's love of outdoor entertaining, awnings make alfresco spaces more comfortable and stylish by providing protection from the sun as well as added personality to exterior facades.

- Straight Drop Awnings
- Pivot Arm Awnings
- Folding Arm Awnings
- Automatic Awnings
- Eureka Conservatory Awnings
- Fixed Steel Awnings
- Canopy Awnings





# STRAIGHT DROP AWNINGS

A simple and stylish addition to the outside of your home, Straight Drop Awnings operate more like blinds, running perpendicular to the ground.

- Zip Style
- Cable Guide
- Straight Drop
- Pivot Arm

They can be created in a range of styles, each with different technical properties. For instance, the awning can utilise a hidden zip system, be guided along cables, or be loose at the sides and fasten at the base.

With many styles and a wide range available, Straight Drop Awnings are highly adaptable to your needs. Because they do not protrude, they are an ideal solution for the outside of windows that are next to fences or walkways. They are also an excellent solution for the sides of roofed decks, verandahs or patios.

A range of fabrics are available for Straight Drop Awnings, from colourful acrylic designs to canvas and clear PVC plastic.



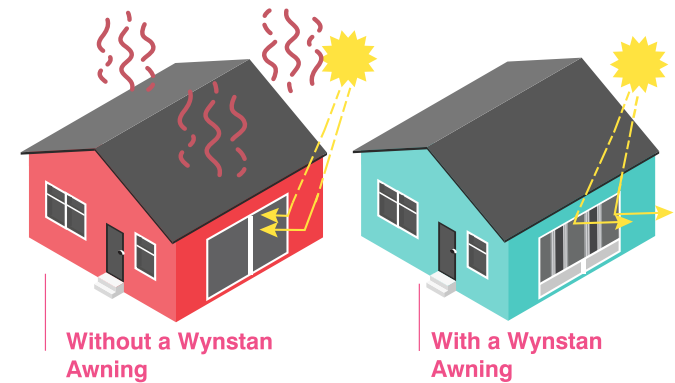
**Cable Guide awnings  
are great for windy  
environments.**







Zip Style  
Awning side  
channel

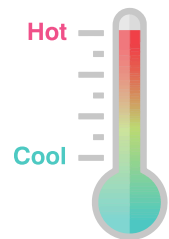


Without a Wynstan  
Awning

With a Wynstan  
Awning

**Straight Drop Awnings are a great way to cool your home from the outside in!**

Wynstan Straight Drop Awnings are proven to reduce cooling energy costs by up to 44%. Our Awnings have been independently tested & proven to significantly reduce cooling energy costs by keeping a standard\* home at a consistent & comfortable temperature throughout the summer months.



\*Results based on a single storey, brick veneer home on a concrete slab using ducted air-conditioning and equally distributed windows with Wynstan Awnings installed with Canvas fabric. Based on independent modelling conducted by White Box Technologies in conjunction with Peter Lyons & Associates June 2013.



# PIVOT ARM AWNINGS

Classical in style, but modern in functionality, Pivot Arm Awnings operate on a pivoting arm, which moves in an arc as it extends and retracts.

This style of awning provides a larger space between the awning and the window, allowing for greater air circulation inside your home.

Pivot Arm Awnings are operated by crank control or via a rope or tape, which can be fed into your home, offering internal control, which is especially important on second storey or higher-level installations. They can also be motorised for hard to reach locations.





# FOLDING ARM AWNINGS

Extend your living space & enjoy shade on demand with one of our stunning Folding Arm Awnings.

A Folding Arm Awning can be manufactured up to 7.1m in width, which can cover large entertaining spaces. Streamlined overhead, Folding Arm Awnings allow people to walk beneath the awning without any obstructing posts when extended or closed. When retracted, the awning sits neatly against the wall.

A Folding Arm Awning can be manufactured in two different styles:

- **Semi Cassette:** ideal for placement under eaves and fitted with a factory adjusted pitch to provide maximum amount of shade. Can be operated by crank handle mechanism, or can be motorised.
- **Cassette:** only when retracted, the fabric and mechanism are fully encased in a cassette, protecting the awning from wind, sun and rain damage when closed. Motorised operation.







Semi Cassette - Closed

Full Cassette - Closed







## AUTOMATIC AWNINGS

Ideal for ground floor locations, Automatic Awnings can be installed close to the window in order to provide a high level of privacy and sun protection.

This style of installation is energy-efficient, reducing heat loss in winter and keeping your home cool in summer. It is perfect for exposed locations as it responds to strong winds by retracting to protect the fabric from weather damage. The awning can be manufactured up to 4m wide, allowing one blind to cover multiple windows.

Choose hoods from a wide range of colours, which add a sleek quality and protect the fabric from weather damage when not in use. The self-locking arms, which slide along guide rails, are simple to operate by hand or a pull stick.





# EUREKA CONSERVATORY AWNINGS

These sleek and modern awnings are designed to be fitted on the outside of homes and commercial buildings, conservatory roofs, glass facades or windows.

This elegant roof shading system can be used as a retractable roof to cover outdoor entertaining areas.

Practicality wins here because the Eureka Conservatory Awning is motorised so you can adjust the amount of sun protection with the touch of a button.







## FIXED STEEL AWNINGS

Tough, durable and economical, Fixed Steel Awnings are manufactured from tough COLORBOND® steel, providing your home with excellent protection from the rain and damaging UV rays.

These classic awnings can add great style and dimension to your home and are available in a combination of colours. Steel Awnings are fixed to the wall, but the degree of slope can be anywhere from 15 to 45 degrees. If you require a large awning, we recommend the use of support posts to further enhance stability.





# CANOPY AWNINGS

Full of traditional charm, Canopy Awnings provide valuable cover and protection over windows and doorways, while adding character to your home.

Our designs are incredibly versatile and Wynstan can manufacture your Canopy Awning in styles that include curved or triangular shapes, and with the bottom covered or uncovered. We also offer a great selection of fabrics to choose from, ensuring the awning matches your home's aesthetic.







# WYNMOTION MOTORISATION

Enhance your Wynstan Blinds and Awnings by choosing Wynmotion, our unique motorisation system. Eliminate the need for cords or cranks and experience ultimate convenience and luxury, all with a touch of a button!





# MOTORISE WITH WYNMOTION

There's no time like now to invest in the future.

Especially designed for a relaxed Australian lifestyle, Wynmotion motorised solutions mean eliminating cords – and controlling your Blinds, Curtains and Awnings at the touch of a button. It's a hands-off approach that means the kids will no longer be tempted to get in a tangle, there's no back-wrenching cranking for you to do, and your windows will enjoy a sleek, stylish motorised makeover.





# WYNMOTION FEATURES

## Rechargeable Motor



**6M LONG CABLE RECHARGER**  
Which reduces the need for extension cords to reach a power point.



**BATTERIES HIDDEN INSIDE THE MOTOR**  
No unsightly external battery packs.



**CAN BE INSTALLED IN MOST WINDOWS**  
Save on electrician costs.



**200 CYCLES PER CHARGE**  
Only needs to be charged four times per year.



**QUICK CHARGE**  
Fully charged in three hours.



**RADIO CONTROLLED**  
Can be used with any certified remote.



**NO CORDS**  
100% child safe.

## Mains Powered Motor



**REMOTE OR HOME AUTOMATION**  
Can connect to any home.



**ENERGY EFFICIENT**  
Wynmotion sensors automatically control Blinds and Awnings to keep your home cooler in summer and warmer in winter.



**NEVER NEEDS RECHARGING**  
Once set up, you don't need to worry about it.



**RADIO CONTROLLED**  
Can be used with any certified remote.



**NO CORDS**  
100% child safe.





# IS WYNMOTION FOR YOU?

Please refer to the following lists to check if your product is compatible with Wynmotion:

## Rechargeable Motor (Blinds & Curtains)

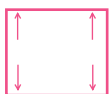
Roller Blinds	Curtains
Roman Blinds	Honeycomb Shades
Vision Blinds	

## Mains Power Motor (Blinds & Curtains)

Roller Blinds	Curtains
Roman Blinds	Honeycomb Shades
Vision Blinds	
Timber Venetians	

## Mains Power Motor (Awnings)

Straight Drop Awnings
Zip Awnings
Pivot Arm Awnings
Folding Arm Awnings
Eureka Conservatory Awnings
Cable Guide Awnings



### SELF TIGHTENING OPTION

Greater level of wind control for straight drop awnings.

### OUR SMART HOME SYSTEM

is compatible with Google Home and Amazon Alexa.

Smart Home System

Remote





# SHUTTERS

---

Always on trend and with quality in mind, Wynstan offers beautifully elegant custom-made Plantation Shutters, perfectly crafted to fit your home, as well as Aluminium Shutters especially designed for exterior spaces.

Plantation Shutters  
Aluminium Shutters



# PLANTATION SHUTTERS

Our elegant Plantation Shutters are a timeless addition to your home and are available in four materials -

- Fauxwood
- Basswood
- Hardwood
- Australis

With excellent thermal resistance, Plantation Shutters not only keep you cool during the summer, but help retain heat during the winter. Wynstan's Plantation Shutters are easy to clean and virtually maintenance-free – excellent for dust allergy sufferers and wet areas like the kitchen and bathroom.



Customisable in both shape and colour!







Adjustable  
louvres allow  
full light  
control

Plantation Shutters are a timeless addition to your home. They provide the ultimate light control – each panel can be independently

adjusted to temper the light and control privacy. Also available in custom shape, colour and bi-fold solutions too!





# ALUMINIUM SHUTTERS

The perfect outdoor solution, Aluminium Shutters provide understated style and sophistication as well as practicality.

Aluminium Shutters can also be used indoors, but are particularly effective outdoors as they are incredibly durable and feature a high UV powder-coated finish. Aluminium Shutters can be hinged, fixed, bi-fold or sliding.







# SECURITY DOORS, GRILLES & FLYSCREENS

---

Crimsafe® Security Doors  
Crimsafe® Security Windows  
Flyscreen Solutions  
Safety Doors and Grilles



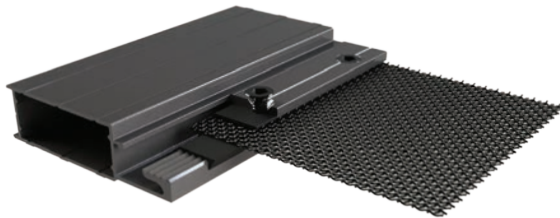


# WHY CRIMS SAFE?

Keep your home secure with Crimsafe®, manufactured and installed by Wynstan.

It's taken years of research to develop the strongest, most trusted security screen on the market, and it's a reputation that Crimsafe is determined to keep through constant innovation. When it comes to protecting your loved ones, Wynstan won't settle for second best so we've chosen Crimsafe Security Screens. Crimsafe's exclusive Screw-Clamp system gives Crimsafe an unparalleled advantage and consistently outperforms competitor products in independent testing. Crimsafe has many imitators, but there is simply no equivalent when it comes to security screen solutions to protect your family and home.

**If it's not Crimsafe...  
It's not Crim Safe.**



**Close-up of Crimsafe mesh and frame**

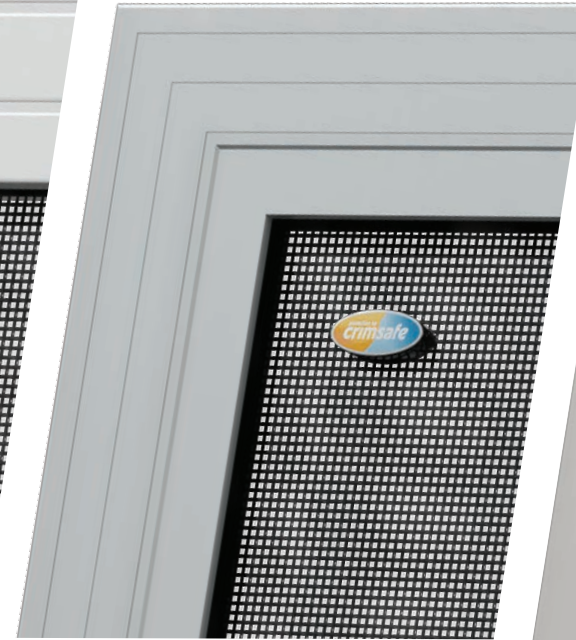
## CRIMS SAFE CLASSIC



**Crimsafe Classic, the new benchmark in security screens offering renowned strength with smoother, cleaner lines.**

Reinforced with the proven strength of carbon fibre, the exclusive CF6 Screw-Clamp™ bites down on the stainless steel mesh on impact with a vice-like grip. This is why Crimsafe Classic not only meets the Australian Standard of 5 x 100 Joule impacts, but can also withstand a single impact of up to 550 Joules.

## CRIMS SAFE REGULAR



**The original security screen that revolutionised the industry over 25 years ago and offers affordable, entry-level protection for your family and home.**

Screw-Clamp™ technology together with Tensile-Tuff® 304 structural-grade stainless steel mesh makes Crimsafe Regular much more than a security screen. It's a solution that offers unhindered views, fresh air, natural light and protection against solar heat gain and harmful UV rays.



## CRIMS SAFE ULTIMATE



**Redefines security screens by offering superior strength, versatility and architectural styling.**

Withstanding 750 Joules of impact. Crimsafe Ultimate is up to 40% stronger than Crimsafe Regular and Classic plus it is available in the widest variety of products.





# CRIMS SAFE® SECURITY DOORS

Crimsafe door solutions to match your space whilst providing world leading security.

Crimsafe® Doors can be:

- **Hinged**
- **Sliding**
- **Bi-fold**
- **Double/French**

Crimsafe® Doors feature a patented Security Mesh Clamp System and 304 Grade Stainless Steel mesh, 26.5% thicker than other mesh on the market. They also work as great flyscreens – allowing airflow and fresh breeze in and keeping criminals and bugs out!

Crimsafe® door frames can be made in a variety of different colours, as well as various wood-grain styles, giving the look of real timber. All Crimsafe® Doors come fitted with a triple locking system, which is crafted from stainless steel for superior strength and exceeds all Australian quality standards. For extra security, mid-rails can come standard with your Crimsafe® Doors. Mid-rails help strengthen your door's lock and protect the hinges by reducing an intruder's ability to lever it from the wall.

In the event of a fire, Crimsafe® can also reduce the level of radiant heat entering the home by 45%, making it a popular choice for bushfire prone areas too.

**Security never looked so good!**



# CRIMSAFE® SLIDING DOORS

Available  
for Double  
Sliding &  
Stacker  
Doors

Triple  
locking

Premium level 304 structural-grade  
Tensile-Tuff™ mesh & Screw-Clamp Technology





## CRIMSAFE® BI-FOLD

With a Crimsafe® Ultimate Bi-Fold, get an even greater level of flexibility, strength and security!

Crimsafe® Bi-Fold Doors are a popular option with contemporary homes and are perfectly suited to the indoor-outdoor nature of Australian living, neatly folding to the side when not in use.

Bi-Fold Doors are available in Crimsafe Ultimate only, making them seven times stronger than Australian requirements and 40% stronger than Crimsafe Regular. Providing you with unrivalled security and flexibility for outdoor entertaining.



Maintain your view & keep mozzies out!

Extra security cover for a clean aesthetic finish.

Crimsafe® Ultimate Bi-fold Doors



# CRIMSAFE® FRENCH DOORS

Got a double door? There's even a crimsafe solution available for French or Double Doors. Enjoy the fresh breeze with added comfort of security.







# CRIMSAFE® WINDOW SOLUTIONS

Ensure your home is protected with Crimsafe® Grilles.

These fixed Window Grilles can be face-fitted, reveal-fitted using an angled frame, or fixed in a Flyscreen track. Crimsafe® Grilles work with windows of various types including louvres, double hung and sliding windows. Crimsafe® Grilles feature Crimsafe® Tensile-Tuff® Security Mesh, which is made of 304 Grade Stainless Steel, offering premium strength. Crimsafe® Grilles also feature the Crimsafe® Mesh Clamp System. This contributes to the product's incredible strength and eliminates the need for unsightly bars.

Crimsafe® Grilles also offer superior heat control. When applied over the whole area of a single glazed window, a Crimsafe® Grille will improve the window's 'Solar Heat Gain Coefficient' by up to 53%. Crimsafe® Grilles are custom manufactured to perfectly fit your window, ensuring a clean finish and excellent protection.



**Safely maintaining your views while keeping a fresh breeze!**



# CRIMSAFE® SAFE-S-CAPE®

In an emergency, you need to evacuate your home in a matter of seconds and that's where a safe-s-scape comes to save the day.

The Safe-S-Scape® range features a keyless emergency exit function, specifically developed for evacuations. Crimsafe® Safe-S-Capes® can be hinged at the top or sides and be made to swing outward or inward, making them suitable for a wide range of spaces.







## RETRACTABLE FLYSCREENS

Retractable Flyscreens offer all the benefits of a regular Flyscreen, with the added bonus of being able to retract.

Our Retractable Screens can be made with a rollaway (retract to the side) system, giving you the option to completely open up a space when desired. Extra stopping points can be added to the track, to allow for the screen to be secured at various points.

Wynstan offers Retractable Flyscreen solutions for all types of windows and doors including sliding, double hung, louvre, casement, awning windows or bi-fold doors. Choose between plain or striped mesh or a pleated style suited for larger openings.





## ROLL-UP FLYSCREENS

An entertainers favourite - keep the bugs out while not impacting the usability of your servery window.

Not only do they look good, but with frames that are powder coated to match your aesthetics, the are durable and strong, so you can trust these screens to stand the test of time!

## FLYSCREENS

We may have enviable warm summers and a relaxed lifestyle, but Australia is also home to a number of unwanted insects.

Flyscreens are an affordable, environmentally friendly and effective solution to preventing insects entering your home. Wynstan Flyscreen frames can be 9mm or 11mm thick and can be powder coated to match your window frames. Choose between fibreglass mesh or, for a greater level of fire resistance, stainless steel mesh. Wynstan Flyscreens can also be designed to meet the bushfire regulations of your local area.



Let the breeze in while keeping the bugs out



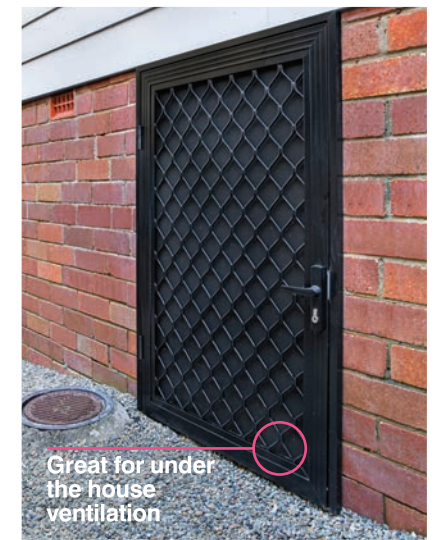




## SAFETY DOORS AND GRILLES

Wynstan Safety Doors and Grilles provide an extra layer of security while also keeping insects outside.

Available in a hinged or sliding design and for extra peace of mind, Safety Doors can be fitted with a triple lock system. We can match your door to an existing doorframe and have a wide colour range to choose from. Mesh options include fibreglass and aluminium. The vision mesh is ideal for maintaining your views while keeping your privacy, and our paw-proof mesh with an optional doggy door will ensure that every member of the family is happy. There is also the option of matching sidelights for your doors. By fitting your windows and doors with our matching safety range, you can create a sleek, uniformed look.





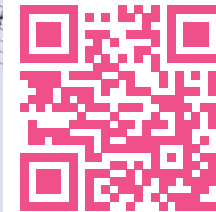
# Y Wait!

## Get the look you love with Interest Free\* Finance

\*See T&C's in-store or online at [wynstan.com.au/interest-free-finance](http://wynstan.com.au/interest-free-finance)

Did you know, we can give you a quote based on your house plans?

- 1 Visit [wynstan.com.au/house-plans](http://wynstan.com.au/house-plans) to upload your house plans and request an estimate quote.
- 2 Or simply contact one of our friendly sales consultants!



## WARRANTY

At Wynstan, we are committed to high standards, manufacturing products that will last for years. We back our product quality with 3, 5, and 20 year warranty as set out in the table below.

	3 Year	5 Year	25 Year
All Blinds	✓		
All Awnings	✓		
Wynmotion		✓	
Plantation Shutters - Timber, Fauxwood & Aluminium		✓	
Plantation Shutters - Australis			✓
Doors, Grilles & Flyscreens	✓		

Crimsafe® Products come with up to 15 years warranty. Please see our Warranty & Care Guide for full terms & conditions for all products.



**FREE In-home Consultation • FREE Measure & Quote • FREE Installation**

**wynstan.com.au | 1300 667 679**