



# OUTDOOR BLINDS & AWNINGS

*Wynstan*  
BLINDS DOORS SHUTTERS AWNINGS



# SHADE, COMFORT & STYLE OUTDOORS

Outdoor Blinds and Awnings are shade structures that attach to the exterior of your home. Whether fixed or retractable, they help block sun, wind and rain, creating a more viable outdoor space.



## WHY YOU NEED AN OUTDOOR BLIND OR AWNING?



### ENJOY YEAR-ROUND COMFORT

Stay cool in summer and protected in winter. Outdoor Blinds and Awnings help block harsh UV rays, wind, and light rain so your space is always inviting.



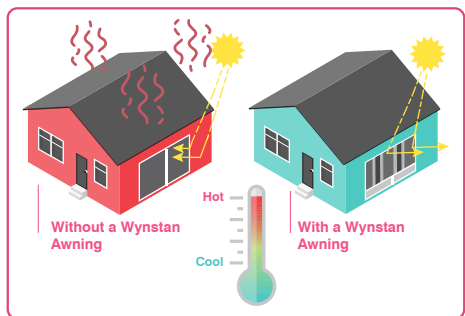
### PRIVACY WITH STYLE

Create a private retreat without sacrificing design. Outdoor blinds keep out prying eyes while blending seamlessly into your home's look.



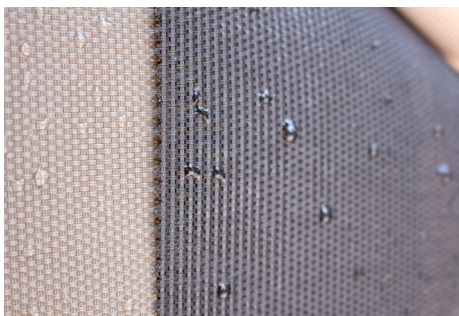
### EXTEND YOUR LIVING SPACE

Maximise every metre of your home. With Outdoor Blinds or Awnings, you'll enjoy more room to relax, dine, and entertain in comfort.



### SAVE ON ENERGY BILLS

Keep your home naturally cooler. By blocking direct sunlight, blinds and awnings have been proven to reduce indoor heat and cut down on air conditioning costs.



### WATER RESISTANCE

Water-resistant fabric shields your space from light rain, so you can enjoy the outdoors longer, rain or shine.



### INCREASE IN PROPERTY VALUE

Add style and functionality, enhancing curb appeal and increasing your home's value.



# A DESIGN FOR EVERY SPACE

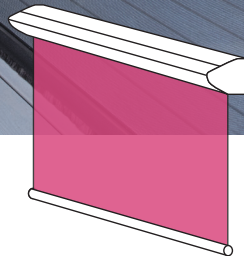
Choose the right shade solution for your space.



## STRAIGHT DROP

### CONTROL SUNLIGHT & PRIVACY

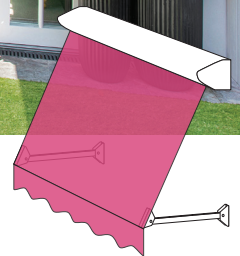
Ideal for patios, balconies or pergolas, these Outdoor Blinds drop straight down to block glare, create privacy and reduce heat - while maintaining airflow.



## ANGLED SHADE

### COOL THE INSIDE WITH A TILT

Designed to angle outward from windows, these awnings reduce heat before it enters your home while still enabling airflow - helping you stay cool and keep the view.



SEE THEM IN MOTION

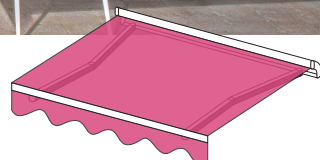


SCAN ME

## OVERHEAD SHADE

### CREATE INSTANT OUTDOOR SHADE

Extend your living space with overhead shade that rolls out when you need it and disappears when you don't — perfect for decks, dining areas and poolside comfort.



## FIXED SHADE

### SHADE NO MATTER THE WEATHER

Provides permanent, reliable protection from sun and rain. Built from durable materials such as steel or canopy fabric, fixed shade structures are designed for long-lasting performance and minimal maintenance.





# STRAIGHT DROP OUTDOOR BLINDS

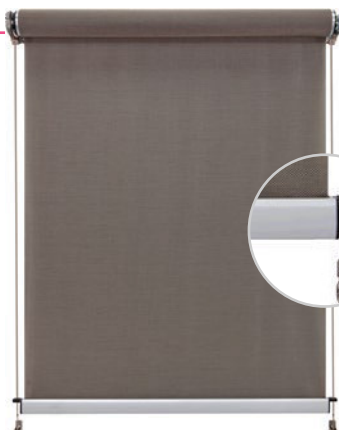
Our Australian designed and engineered Outdoor Blinds have been developed to suit all exterior buildings.

## 3 STYLES



### STRAIGHT DROP

A simple outdoor blind style. The fabric drops freely and can be secured at the bottom.



### CABLE GUIDE

An upgrade with side cables to keep the fabric secured. Can stop at any height.



### ZIP STYLE

Fully enclosed design with hidden side channels. Offers the best wind protection and a neat finish for outdoor areas.



### ZIP STYLE

Designed for precision and protection, the Zip Style Outdoor Blind secures the fabric within discreet side channels. This provides a sleek, streamlined appearance while keeping the fabric taut and reducing gaps for wind, sun, and insects. The Zip Style Outdoor Blinds will not only create an extra outdoor room but protect you from the harsh UV rays. Consider the Zip Style if you have a courtyard or patio.

Zip Style Outdoor Blind with Lite Lift Control with Outlook Mode Fabric in Surfmist.





Cable Guide Outdoor Blind with Open Roller, Motorised Control with Outlook Mode Fabric in Greystone.



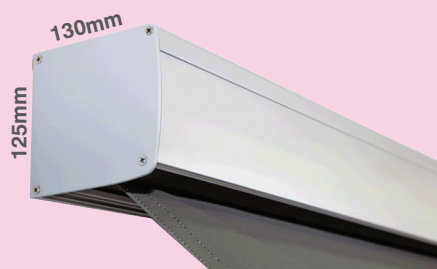
# STRAIGHT DROP OUTDOOR BLINDS

The universal style for any discerning alfresco area, roll them down for the ultimate in privacy without compromising on airflow or light.



## CLOSED HEADBOX

Contemporary, clean lines of the headbox encapsulates the fabric and protects it from external elements such as rain and UV rays which assists in keeping the fabric clean and enhances longevity.



## OPEN HEADBOX

Offers increased air circulation around the roller thereby minimising heat build-up.



## OPEN ROLLER

A simple design gives you a great look and offers an ideal choice for a more economical cost.

## CABLE GUIDE

This robust system not only provides UV protection and air flow, it is incredibly durable and provides the best option when fixing a channel to a wall is not possible. Featuring stainless steel cables perfect for seaside homes. The bottom rail moves up and down the cable guides creating a smooth operation.



Straight Drop Outdoor Blind with Open Roller, Motorised Control with Outlook Mode Fabric in Spice.

## STRAIGHT DROP

This is a traditional style Outdoor Blind that has been given a clean modern look. Simple to operate and ideal for spaces where guide channels are not suitable, the Outdoor Blind can easily be strapped down to a railing or directly to the floor.



# ANGLED SHADE

## SHADING THAT PROJECTS OUT TO LET AIR IN

Angled awnings such as Retractable Automatic and Pivot Arm Awnings project outward from the window. They provide excellent shade while allowing airflow, making them perfect for windows that open outwards or for upper-level applications.



## RETRACTABLE AUTOMATIC AWNINGS

Ideal for ground floor locations. Retractable Automatic Awnings can be installed close to the window in order to provide a high level of privacy and sun protection. This style of installation is energy efficient, reducing the heat loss in winter and keeping your home cool in summer. It is perfect for exposed locations as it responds to strong winds by retracting to protect the fabric from weather damage.



## PIVOT ARM AWNING

Pivot Arm Awnings operate on a pivoting arm which moves in an arc as it extends and retracts. This style of awning provides a larger space between the awning and the window, allowing for greater air circulation inside your house. Pivot Arm Awnings are operated by crank control, rope, tape or motorised giving you ultimate fingertip control, which is especially important on second storey or higher-level installations.



Pivot Arm Awning with Motorised Control with Docryl Acrylic Fabric in Light Grey Stripe.





# OVERHEAD SHADE

## EXTEND YOUR OUTDOOR LIFESTYLE

Overhead awnings like Folding Arm and Eureka Conservetray Awning are designed to provide shade, comfort, and flexibility - ideal with a maximum coverage of up to 27m<sup>2</sup>, they create instant outdoor rooms.

### FOLDING ARM AWNING

A Folding Arm Awning can be manufactured up to 7.1m in width, covering large entertaining spaces. Folding Arm Awnings allow people to walk beneath the awning without any obstructing posts when extended or closed.



Folding Arm Awning with Motorised Control with Docril Acrylic Fabric in Black Stripe.

Full Cassette - Closed, Retracts Neatly Away

### Sensor Options



**Sun & Wind Sensor**  
Automatically retracts awning when it's too windy. Extends when sunny.



**Movement Sensor**  
Detects sudden movement from gusts of wind and automatically retracts to prevent damage.

- **Semi Cassette:** ideal for placement under eaves and fitted with a factory adjusted pitch to provide maximum amount of shade. Can be operated by crank handle mechanism, or can be motorised.



Semi Cassette - Closed

- **Cassette:** only when retracted, the fabric and mechanism are fully encased in a cassette, protecting the awning from wind, sun and rain damage when closed. Motorised operation.



Full Cassette - Closed





Eureka Conservatory with Motorised Control with Docryl Acrylic Fabric in Fawn.

## EUREKA CONSERVATORY AWNING

A temporary roof style awning, especially designed for outdoor entertainment spaces for both residential and commercial buildings. These awnings can be fitted to an existing frame, or we can build the frame for you.



## OVERHEAD SHADE

EXTEND YOUR  
OUTDOOR LIFESTYLE




Posts can be installed to support the end of the Eureka Awning.



# FIXED SHADE

INSTANT SHADE NO  
MATTER THE WEATHER



Triangular Canopy  
Awning with Flat Trim  
with Canvas Fabric in  
Sky.

## CANOPY AWNINGS

Full of traditional charm, Canopy Awnings provide valuable cover and protection over windows and doorways, while adding character to your home. These awnings are designed in many different styles that include curved or trangular shapes and with the bottom covered or uncovered.



## FIXED STEEL AWNING

Tough, durable and economical, Fixed Steel Awnings are manufactured from tough COLORBOND steel providing your home with excellent protection from the rain and damaging UV rays. These classic awning can add great style and dimension to your home. Steel Awnings can be fixed to a wall but the degree of slope can be anywhere from 15 to 45 degrees.





# CUSTOMISATION

Our Awnings & Outdoor Blinds come in a wide range of styles and types to match your home's style. Discover the perfect Awning for your home.

## CONTROL TYPES

### WYNMOTION MOTORISATION

#### WYNMOTION

The Wynmotion range of products are especially designed for a relaxed Australian lifestyle, allowing you to say goodbye to cords and levers and replace them with a stylish little remote or smartphone app. When utilised well, these systems can aide in reducing overall energy costs. Motorised Awnings do not incur the same level of wear and tear as a manually operated one.



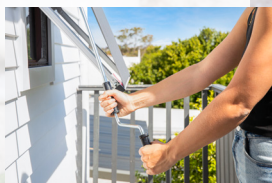
### LITE LIFT

An innovative operating option allowing you to raise & lower the awning to any desired position by simply moving the bottom rail by hand (Zip Style only).



### MANUAL CRANK

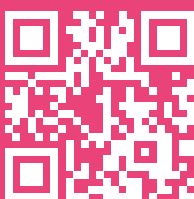
To open or retract the shade manually, a hand crank is provided for easy operation.



## FABRIC OPTIONS

Our fabrics come in a range of opacities from full blockout to sunscreen, you can choose the perfect balance of light, privacy & shade for your home.

To touch & feel the difference - order up to 10 FREE hardware or fabric samples today.



SCAN TO VIEW OUR  
SAMPLE LIBRARY





# THE WYNSTAN WAY

Outdoor Blinds and Awnings can be tricky – that's why Wynstan makes it simple. We come to you with a free measure and quote, expert advice tailored to your home, and free professional installation. With Wynstan, you get style, shade, and peace of mind – the easy way.



## STEP 1

### FREE CONSULTATION

Our friendly team comes to you for a free consultation, helping you choose the perfect awning or outdoor blinds to suit your home and lifestyle. We'll carefully measure your space and provide an obligation-free quote, so you know exactly what to expect, no pressure, just expert advice.

### MANUFACTURED RIGHT HERE IN AUSTRALIA

Every Wynstan Outdoor Blind or Awning is expertly crafted in Sydney. Using quality materials and precision workmanship, we ensure your Outdoor Blind or Awning is made to measure, built to last, and perfectly suited to Australian conditions.



## STEP 2



## STEP 3

### EXPERTLY INSTALLED

Our professional installers take care of everything, ensuring your new Outdoor Blind or Awning is fitted perfectly and functions flawlessly. With precision, care, and attention to detail, we make the process hassle-free, so all you need to do is sit back and enjoy the shade.



